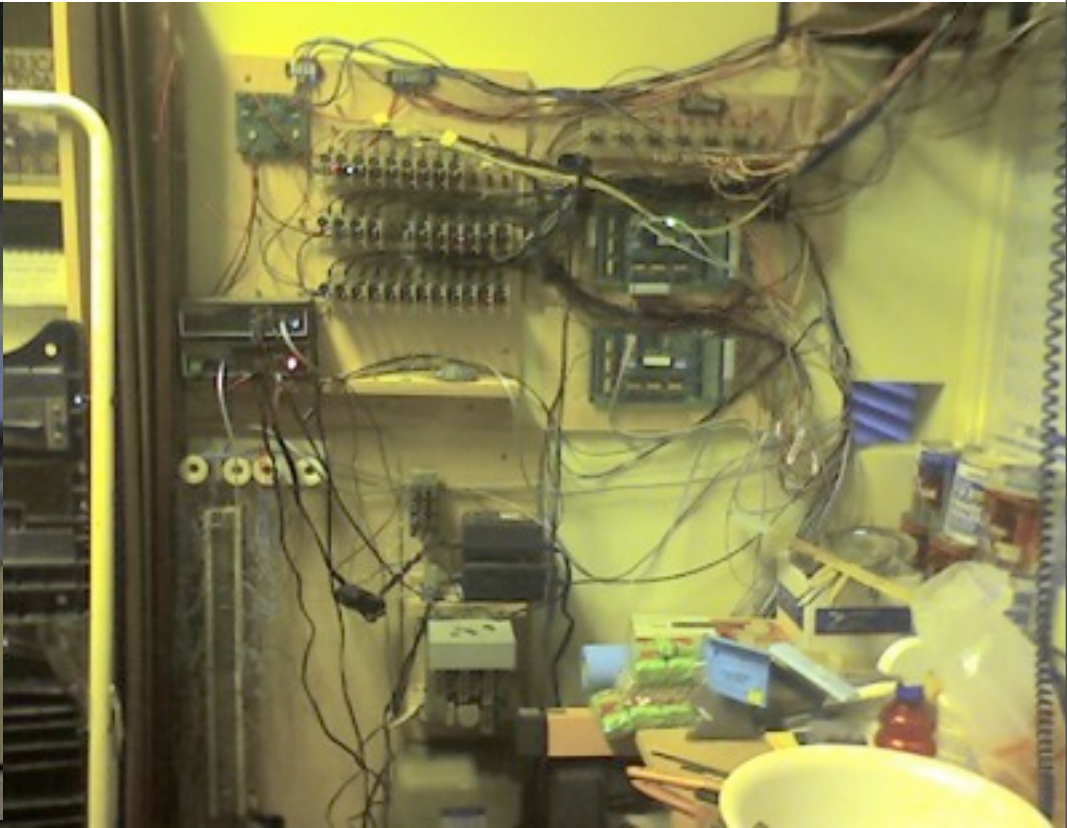
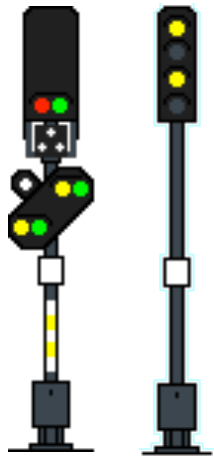


Wither JMRI? User's Forum



What does a year bring?

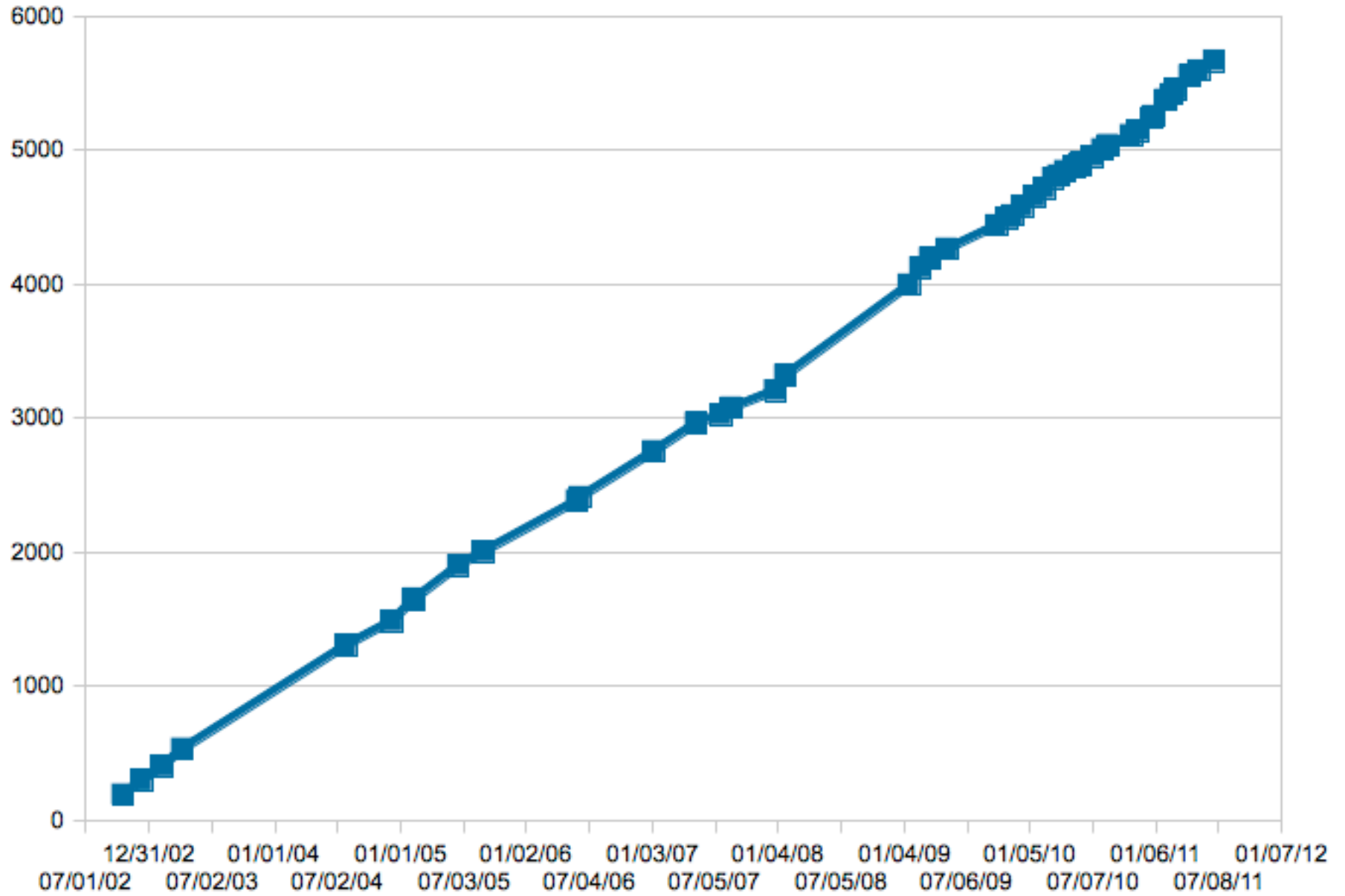
- Operations!
- Multiple Connections
- Signal Aspects



What does a year bring?

	2007	2008	2009	2010	2011
JMRIusers members	2560	3595	4335	4955	5668
Authors (Contributed content)	109	153	168	194	221
Latest Release	2.0	2.2 2.3.1	2.6 2.7.1	2.10 (2.11.1)	well, ...
Decoder Definitions	493 in 160 familie s	590 in 189 families	705 in 210 families	895 in 239 families	1012 in 278 families 3

JMRIusers membership



Questions: When Java 1.6?

- Bad:
 - Doesn't work for < Win98SE, Mac PPC
- Unless we get "Soy Latte" to work...
- Good:
 - Finally get drag&drop on editors, etc
 - Great toolbars!
 - Webstart for easy startup
 - Desktop, browser integration
- Click on file to start program

Proposal: Dec 2011 last everything Java 1.5

Summer 2012 new features might use 1.6, old stuff 1.5

Dec 2012 - all bets off for Java 1.5

What next?

- prototypical track warrants (from/on track diagram, locking conflicts) - see existing Warrants, related to track blocks; panel indications - “Circuit Builder” - Does it work on Mac? Part of control panel editor.
- Way Layout Editor works; lots of existing blocks with naming scheme.
- Can layout editor be more CAD/drawing like? Not easy, infinite list of features to draw track diagrams. XTrkCad isn't two-way. Kevin working on interface. SSL integration nice. Would be good to make 2-left-hand switches a wye. Drop down menu to e.g. locate switches. Panel Editor ‘pick window’ nice. Benchmarks of what (other) software that does this well? TrackBuilder3 & assoc used prebuilt chunks on grid.
- “stumped after 4 digit address” addressed by DecoderPro, and then speed matching come up.... Bachrus reader plus direct cable readout; no-load measurements not reproducible on layout.
- (discussion of automated running) Four methods discussed. Traction modeling case.
- RFID - MERG readers some support in operations. What do people want? Automated hot box. End of train detection. Transponding replacement. “I can't find UP7892!” Bar code readers?

- Question on data input for operations. Import RailOp format? Just cars, or also locations, or also cars-in-locations?
- Easier NX (entrance-exit) panels - see Dennis Drury for approach.
- Touch panel screens & graphics: Not clear if great or just gee-wiz. Web/remote & panel-building should take this into account. (iPhone too small) How to get touch panel ergonomics right? Android tablet I/O getting easier, could drive everything. Layout editor with bigger controls, panel editor with alternate graphics?
- Decoder identification - still a problem

- Integration: Internal/physical switches - want to get WiThrottle to show only specific subset of them. General “show and hide” concept? Using comments (regex)